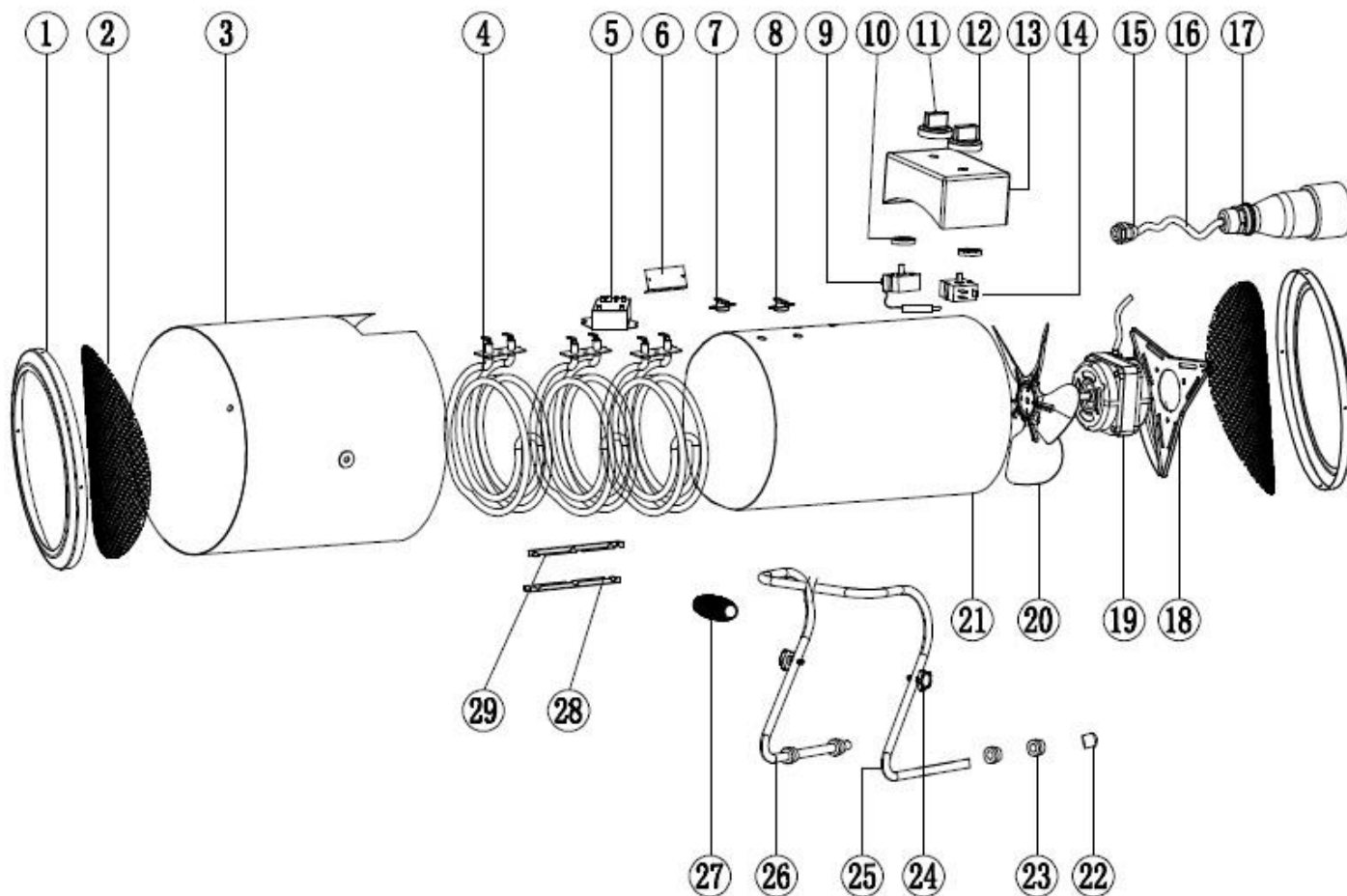


## Documentatie tehnica Vulcano 500



## Producător motoutilaje

## Documentatie tehnică

| Nr. Crt | Denumire produs               | Product name                     | Cod comanda |
|---------|-------------------------------|----------------------------------|-------------|
| 1       | capac grila                   | cover of the grill               | psvlc500-1  |
| 2       | grila                         | air inlet grill                  | psvlc500-2  |
| 3       | carcasa exterioara            | outer casing                     | psvlc500-3  |
| 4       | rezistenta termica            | heating element                  | psvlc500-4  |
| 5       | relau                         | relay                            | psvlc500-5  |
| 6       | suport releu                  | relay brecket                    | psvlc500-6  |
| 7       | termostat 1                   | self-reseting thermostat         | psvlc500-7  |
| 8       | termostat 2                   | delay automatic reset thermostat | psvlc500-8  |
| 9       | buton ajustare temperatura    | adjustable thermostat            | psvlc500-9  |
| 10      | inel etansare                 | sealing ring                     | psvlc500-10 |
| 11      | buton                         | thermostat knob                  | psvlc500-11 |
| 12      | buton                         | switch knob                      | psvlc500-12 |
| 13      | panou control                 | control box                      | psvlc500-13 |
| 14      | buton ajustare ventilator     | switch                           | psvlc500-14 |
| 15      | clema fixare cablu            | power cord fastener              | psvlc500-15 |
| 16      | cablu                         | power cord                       | psvlc500-16 |
| 17      | stecher                       | plug                             | psvlc500-17 |
| 18      | suport motor                  | motor support                    | psvlc500-18 |
| 19      | motor                         | motor                            | psvlc500-19 |
| 20      | ventilator                    | fan                              | psvlc500-20 |
| 21      | carcasa interioara            | inner casing                     | psvlc500-21 |
| 22      | dop                           | tube cap                         | psvlc500-22 |
| 23      | picior                        | plastic feet                     | psvlc500-23 |
| 24      | surub fixare                  | fixed screws                     | psvlc500-24 |
| 25      | maner dreapta                 | right handle                     | psvlc500-25 |
| 26      | maner stanga                  | left handle                      | psvlc500-26 |
| 27      | maner                         | handle                           | psvlc500-27 |
| 28      | suport inferior rezistententa | heating element lower support    | psvlc500-28 |
| 29      | suport superior rezistententa | heating element upper support    | psvlc500-29 |