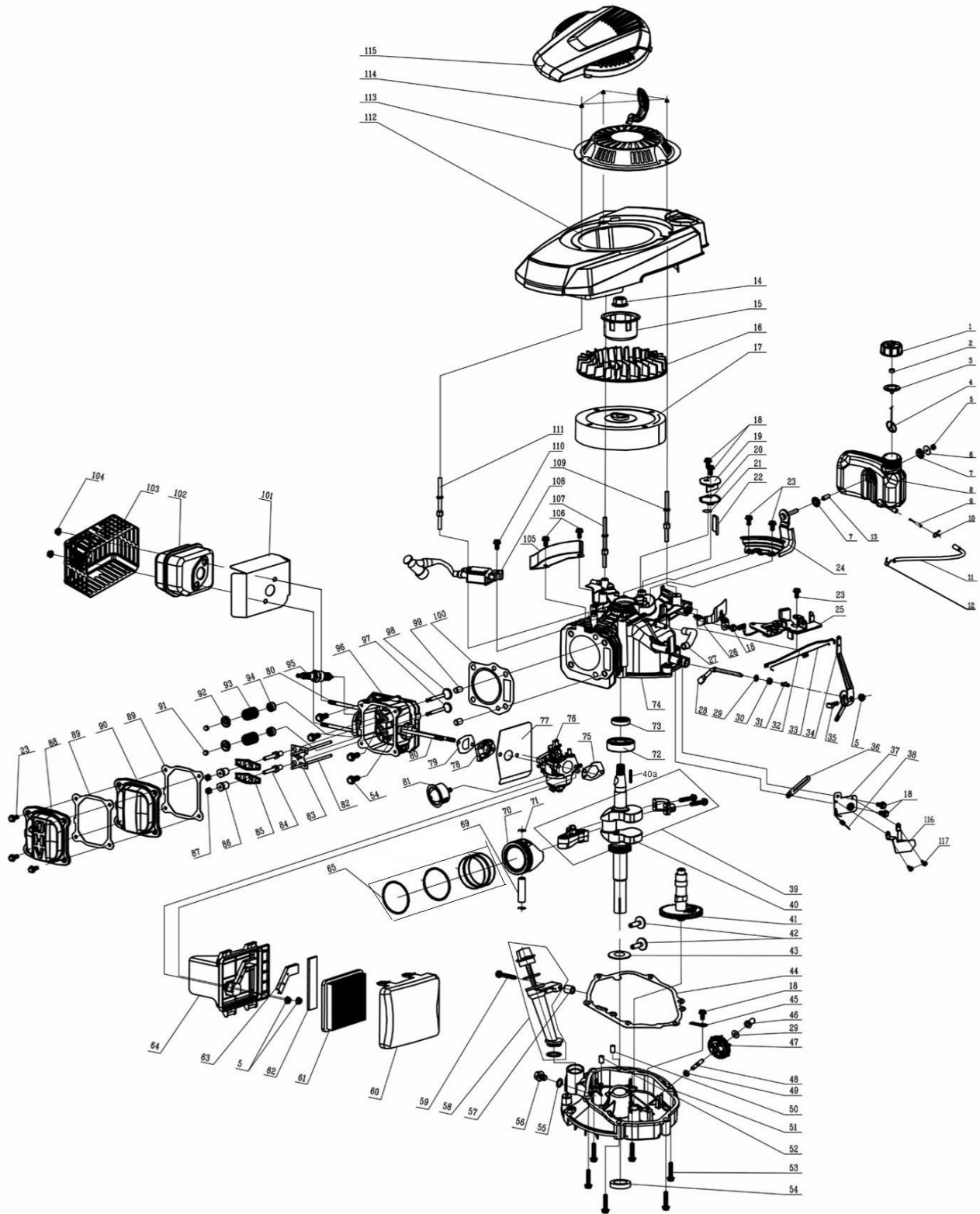


Documentatie tehnica masina de gazon Ruris RX500



| Nr.crt | Denumire produs | Product name | Cod comanda |
|--------|-----------------------------|--------------------------------|--------------|
| 1 | buson rezervor | fuel tank cap | psrx500-1-1 |
| 2 | burete | fuel tank cap sponge | psrx500-1-2 |
| 3 | garnitura | Fuel Tank Cap seal gasket | psrx500-1-3 |
| 4 | fir fluture | connect cable of fuel cap | psrx500-1-4 |
| 5 | piulita M6 | Hex flange nuts | psrx500-1-5 |
| 6 | saiba | The oil tank mount big washer | psrx500-1-6 |
| 7 | amortizor rezervor | Tank damping rubber pad | psrx500-1-7 |
| 8 | rezervor combustibil | fuel tank body | psrx500-1-8 |
| 9 | filtru combustibil | filter | psrx500-1-9 |
| 10 | colier | fuel pipe lock clamp I | psrx500-1-10 |
| 11 | furtun alimentare | fuel pipe | psrx500-1-11 |
| 12 | colier | fuel pipe lock clamp II | psrx500-1-12 |
| 13 | bucsa | Fuel tank mounting bushing | psrx500-1-13 |
| 14 | piulita M14x1.5 | Hex flange nuts | psrx500-1-14 |
| 15 | cuplaj | starter hub | psrx500-1-15 |
| 16 | ventilator | fan | psrx500-1-16 |
| 17 | volanta | flywheel assy | psrx500-1-17 |
| 18 | surub M6x12 | Bolt | psrx500-1-18 |
| 19 | capac | Respirator Cover Plate | psrx500-1-19 |
| 20 | garnitura | Respirator head gasket | psrx500-1-20 |
| 21 | valva | Respirator valve plate | psrx500-1-21 |
| 22 | element filtrant | oil filter net | psrx500-1-22 |
| 23 | surub mM6x14 | Bolt | psrx500-1-23 |
| 24 | suport rezervor combustibil | main bracket of fuel tank | psrx500-1-24 |
| 25 | frana volanta | detent assy. | psrx500-1-25 |
| 26 | deflector | wind shield | psrx500-1-26 |
| 27 | furtun epurator | waste pipe | psrx500-1-27 |
| 28 | ax regulator | rate-limiting rocker arm shaft | psrx500-1-28 |
| 29 | garnitura | Gasket | psrx500-1-29 |
| 30 | simering 6x11x4 | oil seal | psrx500-1-30 |
| 31 | siguranta | R type pin | psrx500-1-31 |
| 32 | tija regulator | Handspike of Valve | psrx500-1-32 |
| 33 | arc regulator | valve spring | psrx500-1-33 |
| 34 | brat regulator | throttle rocker arm | psrx500-1-34 |
| 35 | surub M6x23 | bolt | psrx500-1-35 |
| 36 | clema | clip | psrx500-1-36 |
| 37 | placa | single phrase throttle assy. | psrx500-1-37 |
| 38 | arc acceleratie | throttle control spring | psrx500-1-38 |

Producător motoutilaje

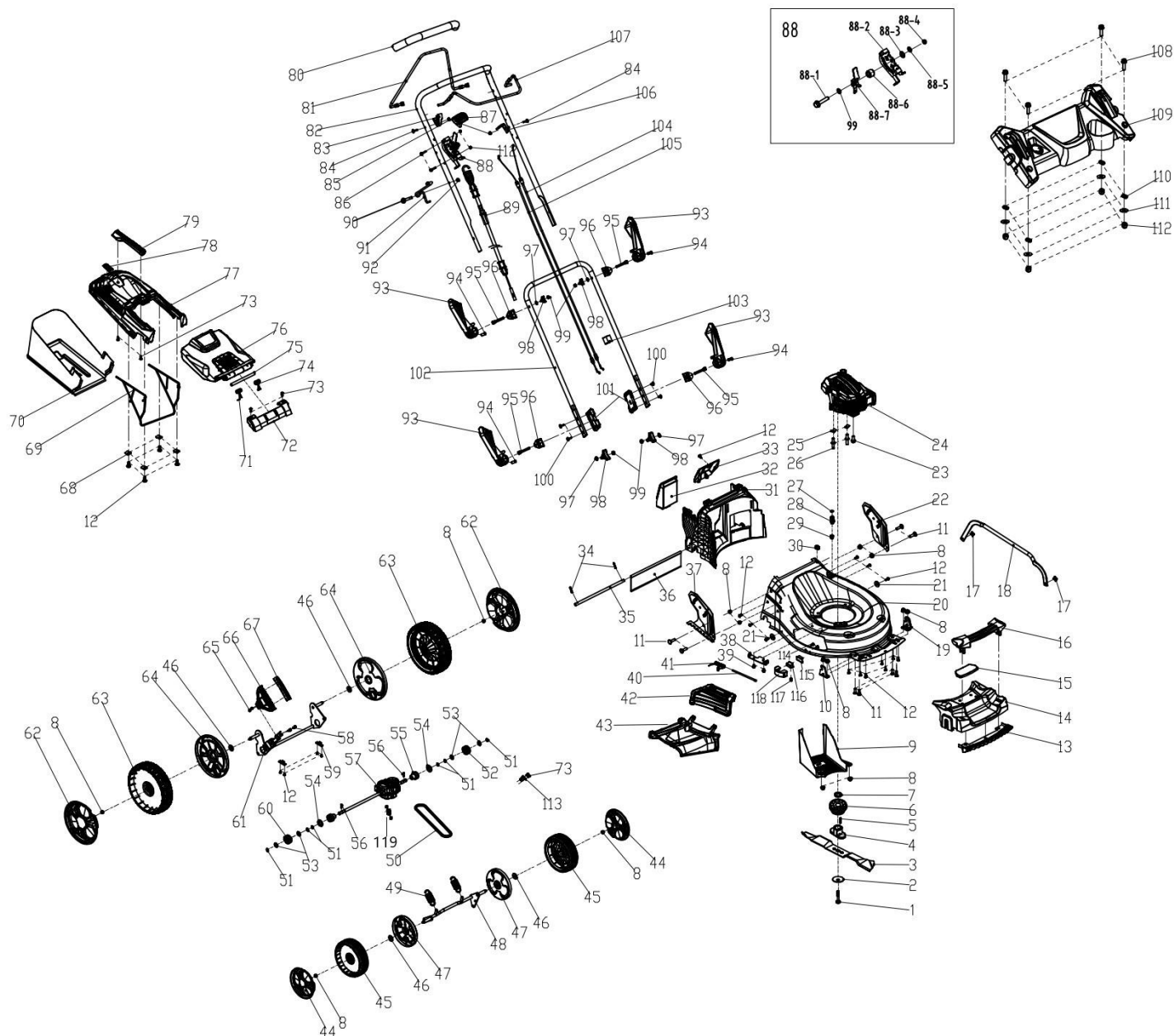
Documentatie tehnică

| | | | |
|-----|------------------------|--|---------------|
| 39 | ansamblu biela | connecting rod assy. | psrx500-1-39 |
| 40 | arbore motor | crankshaft assy. | psrx500-1-40 |
| 40a | pana | key | psrx500-1-40a |
| 41 | ax came | camshaft assy. | psrx500-1-41 |
| 42 | tachet | Rocker | psrx500-1-42 |
| 43 | saiba | clockwise gear gasket | psrx500-1-43 |
| 44 | garnitura capac carter | Respirator head gasket | psrx500-1-44 |
| 45 | clema | rate-limiting gear shaft | psrx500-1-45 |
| 46 | culisa | Sliding Sleeve | psrx500-1-46 |
| 47 | regulator turatie | rete-limiting gear assy. | psrx500-1-47 |
| 48 | ax regulator | rate-limiting gear shaft | psrx500-1-48 |
| 49 | garnitura | Gasket | psrx500-1-49 |
| 50 | pin ghidare | spacing pin | psrx500-1-50 |
| 51 | capac carter | Crank box cover | psrx500-1-51 |
| 52 | pin ghidare | spacing pin | psrx500-1-52 |
| 53 | surub M8x50 | locking bolt | psrx500-1-53 |
| 54 | simering 25x38x7 | oil seal | psrx500-1-54 |
| 55 | garnitura | Oil drain bolt gasket | psrx500-1-55 |
| 56 | buson golire ulei | Oil drain bolt | psrx500-1-56 |
| 57 | bucsa | Distance Sleeve of Lubricating Setting | psrx500-1-57 |
| 58 | ansamblu joja ulei | Lubricating Gauge Assy | psrx500-1-58 |
| 59 | surub M6x50 | Bolt | psrx500-1-59 |
| 60 | capac filtru aer | Air Filter Upper Cover | psrx500-1-60 |
| 61 | filtru aer | Paper filter | psrx500-1-61 |
| 62 | burete | Coarse sponge filter | psrx500-1-62 |
| 63 | placa | Exhaust Gas Cover Board | psrx500-1-63 |
| 64 | carcasa filtru aer | air filter base assy.(II) | psrx500-1-64 |
| 65 | set segmenti | Piston Ring | psrx500-1-65 |
| 69 | bolt pison | piston pin | psrx500-1-69 |
| 70 | piston | Piston | psrx500-1-70 |
| 71 | siguranta | washer | psrx500-1-71 |
| 72 | rulment 6205 | rolling bearing | psrx500-1-72 |
| 73 | simering 25x40x7 | oil seal | psrx500-1-73 |
| 74 | carter motor | crankshaft box assy. | psrx500-1-74 |
| 75 | garnitura filtru aer | Empty filter paper pad | psrx500-1-75 |
| 76 | carburator | Carburetor | psrx500-1-76 |
| 77 | garnitura carburator | Intake pipe paper pad II | psrx500-1-77 |
| 78 | izolator | Air Inlet Pipe | psrx500-1-78 |
| 79 | garnitura izolator | Intake pipe paper pad I | psrx500-1-79 |
| 80 | prezon M6x94 | Dual-head bolts | psrx500-1-80 |
| 81 | pompita amorsare | prime button II | psrx500-1-81 |

Producător motoutilaje

Documentatie tehnică

| | | | |
|-----|---------------------------|---------------------------------------|---------------|
| 82 | tija | push rod | psrx500-1-82 |
| 83 | placuta ghidaj | push rod director plate | psrx500-1-83 |
| 84 | prezon culbutori | valve rocker arm support bolts | psrx500-1-84 |
| 85 | culbutor | Rocker of Valve | psrx500-1-85 |
| 86 | piulita culbutori | Valve adjustment nut | psrx500-1-86 |
| 87 | piulita blocare | And nuts | psrx500-1-87 |
| 88 | capac culbutori II | cylinder head cover II | psrx500-1-88 |
| 89 | garnitura capac culbutori | Respirator head gasket | psrx500-1-89 |
| 90 | capac culbutori I | cylinder head cover I | psrx500-1-90 |
| 91 | pastila | Top Cover of Exhaust Valve | psrx500-1-91 |
| 92 | taler supapa | Spring Coil of Exhaust Valve | psrx500-1-92 |
| 93 | arc supapa | valve spring | psrx500-1-93 |
| 94 | simering supapa | oil seal assy | psrx500-1-94 |
| 95 | bujie | spark plug | br4t |
| 96 | chiuloasa | cyclinder head assy. | psrx500-1-96 |
| 97 | supapa evacuare | Exhaust Valve | psrx500-1-97 |
| 98 | supapa admisie | IntakeValve | psrx500-1-98 |
| 99 | pin ghidaj | spacing pin | psrx500-1-99 |
| 100 | garnitura chiuloasa | Cylinder head gasket | psrx500-1-100 |
| 101 | garnitura toba esapament | Muffler insulating pad | psrx500-1-101 |
| 102 | toba esapament | muffler assy. | psrx500-1-102 |
| 103 | protectie toba esapament | muffler cover assy. | psrx500-1-103 |
| 104 | piulita M6 | Self-locking nut | psrx500-1-104 |
| 105 | deflector | wind shield | psrx500-1-105 |
| 106 | surub M6x16 | Bolt | psrx500-1-106 |
| 107 | prezon | Different-shaped double-head bolts II | psrx500-1-107 |
| 108 | modul aprindere | ignition assy. | psrx500-1-108 |
| 109 | prezon | Dual-head bolts | psrx500-1-109 |
| 110 | surub M6x30 | Bolt | psrx500-1-110 |
| 111 | prezon | Different-shaped double-head bolts II | psrx500-1-111 |
| 112 | carcasa ventilator | The transparent cover | psrx500-1-112 |
| 113 | ansamblu demaror | pull starter assy. | psrx500-1-113 |
| 114 | piulita M6 | Cap nut | psrx500-1-114 |
| 115 | capota | The transparent cover | psrx500-1-115 |



| Nr.crt | Denumire produs | Product name | Cod comanda |
|--------|-----------------|-------------------------|-------------|
| 1 | surub cutit | blade bolt | psrx500-2-1 |
| 2 | saiba | blade washer | psrx500-2-2 |
| 3 | cutit | The blade assembly | psrx500-2-3 |
| 4 | cuplaj cutit | Blade Adapter | psrx500-2-4 |
| 5 | pana | Long Key for Crankshaft | psrx500-2-5 |
| 6 | fulie | Small Belt Wheel | psrx500-2-6 |

Producător motoutilaje

Documentatie tehnică

| | | | |
|----|---------------------------------------|--------------------------------------|--------------|
| 7 | saiba | blade washer | psrx500-2-7 |
| 8 | surub | Self-locking nut | psrx500-2-8 |
| 9 | aparatoare curea | belt cover | psrx500-2-9 |
| 10 | placa prindere dreapta | Precursor Left bracket | psrx500-2-10 |
| 11 | surub m8X15 | Half round head square neck bolts | psrx500-2-11 |
| 12 | surub | Phillips flat head selftapping screw | psrx500-2-12 |
| 13 | pieptan | deck front mask | psrx500-2-13 |
| 14 | ornament fata | front mask | psrx500-2-14 |
| 15 | placa | Face twist before hand | psrx500-2-15 |
| 16 | maner | Face twist before hand | psrx500-2-16 |
| 17 | surub | Type D ring | psrx500-2-17 |
| 18 | tija ajustare inaltime | Height Adjustment Pull Rod | psrx500-2-18 |
| 19 | placa prindere stanga | Precursor Left bracket | psrx500-2-19 |
| 20 | carcasa | deck welding assy. | psrx500-2-20 |
| 21 | saiba $\phi 6.5 \times \phi 18 * 1.5$ | flat Gasket | psrx500-2-21 |
| 22 | placa prindere st | Precursor right bracket | psrx500-2-22 |
| 23 | surub m8x25 | Hexagon head bolts | psrx500-2-23 |
| 24 | motor | petrol engine | psrx500-2-24 |
| 25 | placuta gidaj | Square gasket | psrx500-2-25 |
| 26 | prezon M8*25*12 | Dual-head bolts | psrx500-2-26 |
| 27 | o-ring $\phi 11.2 \times \phi 2.6$ | "O" ring | psrx500-2-27 |
| 28 | stut | inlet | psrx500-2-28 |
| 29 | stut | inlet | psrx500-2-29 |
| 30 | blocator cablu | cable stopper | psrx500-2-30 |
| 31 | deflector | rear baffle | psrx500-2-31 |
| 32 | capac | mulching plug | psrx500-2-32 |
| 33 | capac | rear baffle | psrx500-2-33 |
| 34 | siguranta | R type pin | psrx500-2-34 |
| 35 | tija | Shaft for rear discharge cover | psrx500-2-35 |
| 36 | protectie | rubber dust proof board | psrx500-2-36 |
| 37 | placa prindere dreapta | right bracket | psrx500-2-37 |
| 38 | placa prindere deflector | Bracket plate for defelctor | psrx500-2-38 |
| 39 | surub m6*10 | selftapping screw | psrx500-2-39 |
| 40 | tija | Mulch Shaft | psrx500-2-40 |
| 41 | arc | mulch board spring | psrx500-2-41 |
| 42 | capac evacuare laterala | mulching board | psrx500-2-42 |
| 43 | deflector lateral | side discharge cover | psrx500-2-43 |
| 44 | capac roata fata | outer cover of hub | psrx500-2-44 |
| 45 | roata fata | wheel core | psrx500-2-45 |
| 46 | saiba | Resilient washer | psrx500-2-46 |
| 47 | capac | inner cover of hub | psrx500-2-47 |

Producător motoutilaje

Documentatie tehnică

| | | | |
|----|--------------------------|---|--------------|
| 48 | ax roti fata | front drive assy. | psrx500-2-48 |
| 49 | arc tensionare | Precursor tension spring | psrx500-2-49 |
| 50 | curea s510-z | v belt | psrx500-2-50 |
| 51 | saiba elastica | spring washer | psrx500-2-51 |
| 52 | roata dintata | Ratchet Wheel L | psrx500-2-52 |
| 53 | distantier | selfpropelled ratchet washer | psrx500-2-53 |
| 54 | saiba plata | flat Gasket | psrx500-2-54 |
| 55 | bucsa | rear wheel axle sleeve | psrx500-2-55 |
| 56 | siguranta | bratchet pin | psrx500-2-56 |
| 57 | ansablu transmisie | selfpropelled assy. | psrx500-2-57 |
| 58 | surub m6x14 | Bolt | psrx500-2-58 |
| 59 | placa | Rear plate | psrx500-2-59 |
| 60 | roata dintata | Ratchet Wheel L | psrx500-2-60 |
| 61 | ax roti spate | rear drive assy. | psrx500-2-61 |
| 62 | capac roata spate | outer cover of hub | psrx500-2-62 |
| 63 | roata spate | wheel core | psrx500-2-63 |
| 64 | capac | inner cover of hub | psrx500-2-64 |
| 65 | piulita m6 | Hex flange lock nuts | psrx500-2-65 |
| 66 | maner ajustare inaltime | height adjustment handle | psrx500-2-66 |
| 67 | capac maner | Twist the lid | psrx500-2-67 |
| 68 | saiba | blade washer | psrx500-2-68 |
| 69 | cadru sac colector | plastic top frame | psrx500-2-69 |
| 70 | sac colector | fabric grass bag | psrx500-2-70 |
| 71 | arc | cover spring | psrx500-2-71 |
| 72 | suport sac | rear discharge base | psrx500-2-72 |
| 73 | surub | Phillips flat head selftapping screw | psrx500-2-73 |
| 74 | arc | cover spring | psrx500-2-74 |
| 75 | tija | Shaft for rear discharge cover | psrx500-2-75 |
| 76 | capac evacuaire | rear discharge cover | psrx500-2-76 |
| 77 | capac sac colector | top of grass box | psrx500-2-77 |
| 78 | capac supraplin | air-out board of fabric grass bag cover | psrx500-2-78 |
| 79 | maner capac sac colector | top of grass box | psrx500-2-79 |
| 80 | manson | foam pipe | psrx500-2-80 |
| 81 | maneta actionare roti | Self-propelled Lever | psrx500-2-81 |
| 82 | maner | upper handrail | psrx500-2-82 |
| 83 | placa | lever guard | psrx500-2-83 |
| 84 | surub m6x32 | Round head Hexagon bolt | psrx500-2-84 |
| 85 | piulita m6 | Self-locking nut | psrx500-2-85 |
| 86 | surub m5x30 | Hex flange bolts | psrx500-2-86 |
| 87 | maner acceleratie | throttle box handle | psrx500-2-87 |
| 88 | maneta acceleratie | throttle lever | psrx500-2-88 |

Producător motoutilaje

Documentatie tehnică

| | | | |
|------|--------------------------|--------------------------------------|---------------|
| 88-1 | | Hexagon head bolts | |
| 88-2 | | Cable fixed block | |
| 88-3 | | SPRING WASHER | |
| 88-4 | | Hex lock nut | |
| 88-5 | | Gasket | |
| 88-6 | | bushing | |
| 88-7 | | Stepless speed regulation handle | |
| 89 | cablu acceleratie | throttle cable | psrx500-2-89 |
| 90 | surub m6x30 | Bolt | psrx500-2-90 |
| 91 | carlig | Hang buckle | psrx500-2-91 |
| 92 | piulita m6 | Cap nut | psrx500-2-92 |
| 93 | maner blocare | quick fix knob | psrx500-2-93 |
| 94 | bolt | pin | psrx500-2-94 |
| 95 | surub | Quick Fix Handle | psrx500-2-95 |
| 96 | clema | fastener | psrx500-2-96 |
| 97 | saiba | Flat washer | psrx500-2-97 |
| 98 | rozeta | Triangle knob | psrx500-2-98 |
| 99 | piulita m8 | Hexagon nut m8 | psrx500-2-99 |
| 100 | surub m8x10 | Round head Hexagon bolt m8x10 | psrx500-2-100 |
| 101 | placa prindere maner | Handle gear bracket | psrx500-2-101 |
| 102 | suport maner | Lower handle | psrx500-2-102 |
| 103 | clema | Cable clip | psrx500-2-103 |
| 104 | cablu motor stop | Brake cable | psrx500-2-104 |
| 105 | cablu actionare roti | Self-propelled cable | psrx500-2-105 |
| 106 | placa prindere | Cable fix plate | psrx500-2-106 |
| 107 | maneta motor stop | Brake lever | psrx500-2-107 |
| 108 | surub m5 | Hexagon head bolts m5 | psrx500-2-108 |
| 109 | pupitru | Handle panel | psrx500-2-109 |
| 110 | saiba grover | Spring washer | psrx500-2-110 |
| 111 | saiba plata | Large flat washer | psrx500-2-111 |
| 112 | piulita m5 | Self-locking nut | psrx500-2-112 |
| 113 | placa | Transmission fix plate | psrx500-2-113 |
| 114 | surub st4.2x14 | Phillips flat head selftapping screw | psrx500-2-114 |
| 115 | saiba | Self-locking device washer | psrx500-2-115 |
| 116 | buton autoblocare | Self-locking device block | psrx500-2-116 |
| 117 | arc autoblocare | Self-locking device spring | psrx500-2-117 |
| 118 | suport buton autoblocare | Self-locking device base | psrx500-2-118 |
| 119 | arc | Spring | psrx500-2-119 |